



Friendship Circle

A program for adults 55+

Jalena Mays, Program Director
 707-528-1476, jalenam@jccsoco.org
 Jacki Newfield, Program Assistant
 707-528-1182, jackin@jccsoco.org

The Friendship Circle is a Program of the Jewish Community Center, Sonoma County



Friends of the Island performing at the 2015 Friendship Circle Membership Tea on July 19

Luncheons

Monday, August 10 *Discover the World of Jane Austin*



Docent Speaker **Katheryn Zupsic** returns from the Fine Arts Council of San Francisco to present **The World of Jane Austen: British Art and Culture in the 18th and 19th Centuries**. Explore the world of the beloved English author, Jane Austen, through the arts of her time. We'll see paintings that Austen herself would have seen; portraits of ladies, gentlemen, and handsome military officers by famous artists such as Gainsborough and Reynolds, and English landscape paintings by Constable and Turner. We will also look at the changing fashions of her day, country estates and gardens, and the budding English porcelain industry. A perspective of Jane Austen's world will emerge, which will illuminate her life, her novels, and the fascinating time and place in which she lived. *RSVP by August 5.*

Monday, August 24 *What Makes YOU Tick?*



Naomi Tickle is the leading face reading expert, International Speaker and Career Consultant. She is the author of **What Makes People Tick and Why**. Naomi has appeared on appeared on CNN, NBC, BBC, Good Morning America and numerous television radio interviews around the world. Her book is used as a tool for communications, understanding children, relationships, team building, sales, career guidance and personal development. Naomi has given workshops and lectures to Norwich University, Vermont, Kinesiology Conferences in USA and UK. Using a PowerPoint presentation, Naomi will be sharing with us some of the key traits seen in the face that indicate both our strengths and challenges. You will leave with the knowledge on how to use this information in all areas of your life. Naomi's passion is about helping people find their path in life. *RSVP by August 19.*

Luncheon Details

RSVP By the Wednesday before the luncheon 528-1182 or friendshipcircle@jccsoco.org

Time 12:00–1:30 pm

Location Congregation Shomrei Torah
2600 Bennett Valley Rd., Santa Rosa.

Price \$12 Friendship Circle members; \$15 non-members, includes catered lunch and dessert. Payment is accepted at the door. Please bring currency no higher than \$50.

Lunches are ordered according to the number of reservations. If you are unable to attend a luncheon for which you are reserved, please spare us the loss and make a donation for an equal or greater amount. Thank you for your support.

Rides to Friendship Circle events from JFCS may be available in select areas (now including Petaluma) upon request one week prior to date of event thanks to a grant from the San Francisco Jewish Community Federation.

Announcements & Appreciation

Save These Dates!



Aug 10	Luncheon at CST — The World of Jane Austin
Aug 20	Senior Excursion — “Phantom of the Opera,” SHN Orpheum Theater, SF
Aug 24	Luncheon at CST — What Makes YOU Tick?
Sept 7	JCC Closed for Labor Day
Sept 10	Senior Excursion – Lunch and Shopping in Healdsburg
Sept 13-22	FC High Holy Day Outreach
Sept 14 & 15	JCC Closed for Rosh Hashanah
Sept 23	JCC Closed for Yom Kippur
Oct 13	Lunch in Sebastopol and JCC’s Film Festival
Oct 19-23	Ashland Oregon Shakespeare Festival

Thank You Thank You

For generous donations made to the Friendship Circle, above and beyond regular membership dues, we would like to thank the following members: **Barry & Sheila Hirsch, Helga and Morris Spizman, Eugene Kluga, Irma Weissbein, Charles and Elinor King, and Ivan Barta.**

Generous Donations

- **Vicki Kalish** in memory of Harriet Baer’s brother, Marvin Manning
- **Vicki Kalish** wishing Ruth Turner a speedy recovery
- **Beverly Cutler** in memory of Jerry
- **Judith and Arthur Kayen** in memory Marvin Manning
- **Pat Thomas** in memory of Harry Hankin
- **Jalena Mays** in memory of Harry Hankin
- **Birdie Lane** in memory of David Stair
- **Gussie Hankin** in memory of her beloved husband Harry Hankin

If you are remembering someone you hold dear, or would like to celebrate a friend or family member, please consider making a donation to the Friendship Circle in their honor.

Friendship Circle Membership Tea



The annual Friendship Circle Membership Tea is a special event, free for all members, where the JCC staff and the FC Advisory Committee thank our members for their continued support. This event relies on core volunteers and highlights the strength of our thriving community.

Thank you to all volunteers who organized and baked for the Tea: **Joy Lovinger, Ruth Turner, Bill and Pat Thomas, Edy Smith, Ray Kaplan, Carol Jarvis, Liz Hagen, Lois Abramson, Vicki Kalish, Natalie Friedman, Janine Bamberger, and Jalena Mays.**

And thank you to those who donated door prizes: **Trader Joes, Taylor Maid Farms, Ray Kaplan, Acre Coffee, Oliver’s Market, Renee Shipley, Copperfield’s Books, Harriet Baer, Jacki Newfield, Bill and Pat Thomas, Joy Lovinger, Liz Hagen and Santa Rosa SRT.**

Thank you also to our members who volunteered as drivers for those in need: **Liz Hagen, Sandy Tate, Lolaine Ravensunbird, Barbara Scharf, and Lois Abramson.**



Welcome to New Friendship Circle Members

**Barbara Walton
Craig McKinley
Eugene Kluga
Lois Gilbert
Selma Sklar
Rhoda Bloom
Susan Snyder
Carol Vellutini
Susan Wendrow
Irwin and Judy Miller
Claudine Fournigault
Barbara Meringo McKinley**



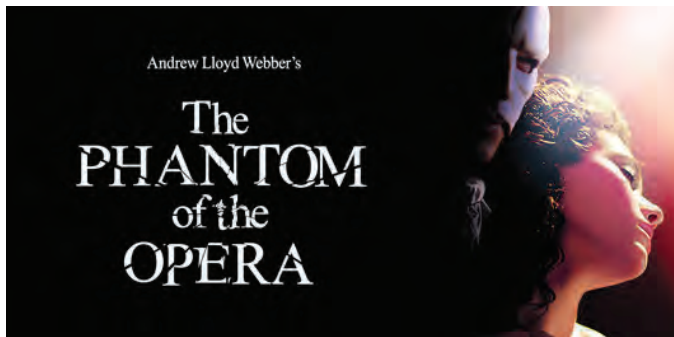
R.S.V.P.

Répondez s'il vous plaît

Please be sure to make advanced reservations for all events and to cancel in the event you cannot attend.



The **ASHLAND TRIP** to the Oregon Shakespeare Festival from Oct. 19–23 is **SOLD OUT**. We are accepting names for the waitlist in case of cancellations. Please contact FC Program Assistant, Jacki Newfield at 707-528-1182 or jackin@jccsoco.org for more information.



Senior Excursion to SHN's
Orpheum Theater
**THE PHANTOM
 OF THE OPERA**
 Thursday, August 20

A Spectacular New Production

Following an acclaimed sold-out tour of the United Kingdom, Cameron Mackintosh's spectacular new production of Andrew Lloyd Webber's phenomenal musical success, **THE PHANTOM OF THE OPERA**, will come to San Francisco as part of a brand new North American production. Critics are raving that this breathtaking production is "bigger and better than ever before." *This PHANTOM* features a brilliant new scenic design by Paul Brown, Tony Award®-winning original costume design by Maria Björnson, lighting design by Tony Award®-winner Paule Constable, new choreography by Scott Ambler, and a new staging by director Laurence Connor. The production, overseen by Matthew Bourne and Cameron Mackintosh, boasts many exciting special effects including the show's legendary chandelier. The beloved story and thrilling score — with songs like "Music of the Night," "All I Ask Of You," and "Masquerade" — will be performed by a cast and orchestra of 52, making this PHANTOM one of the largest productions now on tour.

Boxed lunch will be handed out when you arrive at the bus. Please select one of the following and indicate your choice when making your reservation:



- Smoked Turkey Sandwich • Tuna Salad Sandwich**
- Mediterranean Veggie Sandwich**

Cost: \$60 Friendship Circle Members; \$75 non-members (includes: transportation, lunch, show, parking and tolls, tax, gratuity and snacks along the way).

Medical Emergency Contact Form: You must have an updated medical form by date of departure. If we do not have a current medical form for you on file, visit www.jccsoco.org or request a form to complete and return to the friendship circle office prior to the day of the trip. Please call Jacki at 528-1182 if you have any questions.

Bus Schedule:

- **LEAVES** at 11:45 AM from Congregation Beth Ami (4676 Mayette Ave, Santa Rosa). Please park in the overflow parking lot (west).
- **LEAVES** at 12:15 AM from Petaluma Community Center (320 N. Mc Dowell Blvd., Petaluma).
- **LEAVING** San Francisco immediately after the show at APPROXIMATELY 5 PM

Rides to and from the bus on the JFCS van may be available upon request by July 17.

When making your reservation, please let us know if you need a ride to the bus or if you are meeting the bus in Petaluma.

Reservations: Limited to 50. RSVP by August 4. Friendship Circle Members and those who have not been able to attend a recent excursion will be given first priority. Please call the Friendship Circle office at 707-528-1182 to reserve. As soon as we have confirmed receipt of your reservation by phone, you can pay using a credit card over the phone or mail in a check made payable to the JCC, Friendship Circle, 1301 Farmers Lane, Suite C103, Santa Rosa, CA 95405. This will secure your reservation. Please include the name and date of the event on your check (Phantom 8/20). **Please make your reservation early so you don't miss out.** We strongly encourage those who have never attended one of our excursions to sign up! **No one is ever turned away based on ability to pay.** *(Please speak to Jalena in confidence.)*

First 5 participants to register will receive a complimentary 25 oz. Camelback Water Bottle.

Senior Excursions are sponsored with the generous support of the Senior Excursion Fund of the Jewish Community Federation of San Francisco, the Peninsula, Marin and Sonoma Counties.



On the Bus heading to Sacramento, May 12, 2015

JCC's Jewish Film Festival



The 20th Annual Sonoma County Jewish Film Festival, presented by the Jewish Community Center Sonoma County

brings international drama, comedy and documentary films every Tuesday at 1:00 pm and 7:30 pm **October 13 through November 17.**

These choice films from England, Germany, Poland, the USA, Uruguay, and Israel will be shown at the Rialto Cinemas, 6868 McKinley Street in Sebastopol.

Save the Date! Join the Friendship Circle for **LUNCH** and see the **OPENING MATINEE** on **Tuesday October 13th**. Restaurant meeting details and the featured film description will be announced in the September/October 2015 Friendship Circle Newsletter.

For general JCC Film Festival questions or to be added to the Film Festival Mailing List contact Ellen Blustein, 707-526-5538, or visit www.jccsoco.org.

A Sweet New Year



Friendship Circle is bringing High Holy Day programs to retirement communities throughout Sonoma County. Marking the New Year 5776, Rosh Hashana begins at sundown Sunday, September 13, and Kol Nidre for Yom Kippur is Tuesday night, September 22.

If you know of a community in need of programming, or if you would like to help facilitate a program this year, please contact Jalena Mays:

707-528-1476 or jalenam@jccsoco.org. The High Holy Day Outreach schedule will be posted in the September/October 2015 Newsletter.



Clubs and Classes

Modern Dance with Phyllis Nesbitt

Location: Congregation Shomrei Torah, 2600 Bennett Valley Rd, SR
When: Tuesdays, 10:00–10:45 am
RSVP, 528-1476 or jalenam@jccsoco.org

Mahjongg with Carol Jarvis

Please make reservations in advance so we have enough supplies for everyone. All levels welcome.

Location: Upstairs at the JCC (no elevator)
When: 2nd & 4th Tuesday of each month, 1:00–3:00 pm
Donation: \$2 per class paid at the door
RSVP, 528-1476 or jalenam@jccsoco.org

2 Classes Sponsored by the Friendship Circle, SRJC, and Congregation Beth Ami

Location: Congregation Beth Ami, 4676 Mayette Ave in Santa Rosa, Rooms 12 & 13

- **Autobiographical Creative Writing** with Dani Burlison on Mondays, 9:30 am–12:30 pm
- **Watercolor** with Susan St. Thomas on Tuesdays, 10:00 am–12:30 pm
Free, drop-ins welcome, open to all.

Exercise Class with Barbara Goodridge

Location: Congregation Shomrei Torah, 2600 Bennett Valley Rd, SR
When: Wednesdays & Fridays, 10:20–11:30 am
Free, drop-ins welcome, open to all.
Sponsored by the Friendship Circle, SRJC, and Congregation Shomrei Torah



Seniors At Home

BETTER CARE STARTS AT HOME



Home Care, Care Management,
Transportation, and more

Call **707-571-8533**

www.SeniorsAtHome.org

A DIVISION OF JEWISH FAMILY AND CHILDREN'S SERVICES



*Celebrate the spirit of Tzedakah
and the Joy of Tikkun Olam with
the Jewish Community Free Clinic*

NOW LOCATED
50 Montgomery Dr.
Santa Rosa, 95404
VOLUNTEERS ARE
ALWAYS NEEDED

Become a friend of the JCFC
www.jewishfreeclinic.org
info@jewishfreeclinic.org
(707) 585-7780

REDUCE → REUSE → RECYCLE

The Friendship Circle cares about our environment, and strives to reduce its carbon footprint. We have begun to use compostable supplies at our luncheons and continue to discover ways to become more GREEN.

We are now offering a paperless way to receive this Friendship Circle Newsletter. Receiving the newsletter online = no waiting; reduced paper waste; and you'll be first to know what events are upcoming.

If you would like to read our newsletter online and STOP receiving the paper copy in your mailbox, please let us know by contacting Jacki at 707-528-1182 or jackin@jccsoco.org.





LUNCH & SHOPPING *in Healdsburg!*

Thursday, September 10



Join the Friendship Circle for lunch and spend free time in the beautiful town square of Healdsburg. We will sit down for a bountiful family-style lunch in the stylish Italian eatery, **Campo Fina**. Lunch will include a starter

salad, sandwich options to choose from, a variety of desserts, coffee, tea, and lemonade. After lunch, we will have plenty of time to explore the multitude of fabulous shops, or simply sit and enjoy the Plaza.



Cost: FC members \$20 per person; non-members \$25 per person (*includes transportation to and from Healdsburg, and an all-inclusive 3-course meal*).

Reservations are limited to 25. Please call to reserve your space by contacting Jacki at 707-528-1182 or jackin@jccsoco.org. Once you've been confirmed, mail in your check made out to JCC Friendship Circle, 1301 Farmers Lane, #C103, Santa Rosa, 95405, and include the name and date of the event on your check (Healdsburg 9/10), or call and pay using a credit card. Be sure to indicate your lunch choice when making your reservation. **RSVP by September 3.**

A **Medical Form** is required for participation on this trip. Jacki will mail you a form if we do not currently have one file or if an updated form is required.

Bus Schedule: *Rides to and from the bus on the JFCS van may be available upon request at least one week in advance of the trip.*

- **LEAVES at 10:15 am** from Petaluma Community Center (320 N. Mc Dowell Blvd., Petaluma).
- **LEAVES at 10:45 am** from Congregation Beth Ami (4676 Mayette Ave, Santa Rosa). Please park in the western overflow parking lot.
- **LEAVES Healdsburg at 3:00 PM** to return to Santa Rosa and Petaluma.

Please let us know in advance if you are being picked up in Petaluma or if you need a ride to the bus.

Senior Excursions are sponsored with the generous support of the Senior Excursion Fund of the Jewish Community Federation of San Francisco, the Peninsula, Marin and Sonoma Counties.



Jewish Community Center

SONOMA COUNTY
1301 Farmers Lane, Suite 103
Santa Rosa, CA 95405

August 2015

ADDRESS SERVICE REQUESTED

Friendship NEWSLETTER Circle

This newsletter is a periodical issued bimonthly.
It is published by the Jewish Community Center, Sonoma County.
All members receive this periodical free.

Non Profit Org
U.S. Postage
PAID
Permit No. 465
Santa Rosa, CA

We Appreciate Your Generosity

You may make a tax-deductible contribution directly to Friendship Circle:

- In honor of an event or someone who is a light in your life
- In tribute to the memory of someone you hold dear

We will send a tribute card to the person being acknowledged. I am contributing \$ _____ to Friendship Circle.

Please print all names exactly as you wish them to appear: designate Mr., Mrs., Ms., Miss

In Memory of: _____

In Honor of: _____

Contribution from: _____

Address: _____

City/State/Zip: _____

Please send an acknowledgement to: _____

Address: _____

City: _____ State/Zip: _____

Friendship Circle is a program of the Jewish Community Center, Sonoma County which is a 501(c) 3 non-profit corporation, a beneficiary of the Jewish Community Federation of San Francisco, the Peninsula, Marin and Sonoma Counties.



The mission of the Jewish Community Federation is to foster and enhance Jewish life here at home, in Israel, and around the world by caring for the vulnerable, providing Jewish education for our children, engaging our interfaith families, promoting peoplehood and Israel and providing aid in times of crises.

Support from the Jewish Community Federation is not enough. We depend on members of the Friendship Circle community for donations and support.