

June–July 2015  
IT'S SUMMER TIME!

# Friendship Circle

A program for adults 55+

Jalena Mays, Program Director  
707-528-1476, [jalenam@jccsoco.org](mailto:jalenam@jccsoco.org)  
Jacki Newfield, Program Assistant  
[jackin@jccsoco.org](mailto:jackin@jccsoco.org)

## The Friendship Circle is a Program of the Jewish Community Center, Sonoma County



Left to right: June Liebling, Irwin and Judy Miller, and Binese Goldberg boarding The Hornblower Riverboat Cruise in Sacramento on May 14. Edie Sternfield-Squires and Ethel Snarsky in an antique Dining Car at the Railroad Museum in Sacramento on May 13, and Ruth and Ira Rosenberg at the Legion of Honor on May 6.



You're Invited... Reserve Today  
Friendship Circle  
**Membership Tea**  
Sunday, July 19 • 2–4 pm

Aloha! You're invited to join us for a Hawaiian Luau Party as we honor our Friendship Circle members! Be our guest for entertainment and sweet treats, it's **FREE** for all members! More details about this event are on page 3 of this newsletter.



## Luncheons

### Monday, June 1 Mahjongg with Annelise Heinz



Mahjongg has a long history of bringing people together — but is a much more modern game than most people know. Join the Friendship Circle for lunch and learn more about Mahjongg. Special guest speaker **Annelise Heinz** will trace the game's surprising American career. Mahjongg has shaped modern America, from its roots in China to New York suburbs and current films. Discover how this game of skill has — while also remaining a Chinese game — transcended boundaries and evolved to become truly American. Speaker Annelise Heinz, PhD Candidate in history at Stanford University is writing the first scholarly history of mahjong in the United States. Originally from Southern California, Annelise has also lived in Washington State and Southwest China, where she played mahjong for the first time. *RSVP by Wednesday, May 27.*



### Monday, August 10 Jane Austin with Katheryn Zupsic



Docent Speaker **Katheryn Zupsic** returns from the Fine Arts Council of San Francisco to present **The World of Jane Austen: British Art and Culture in the 18<sup>th</sup> and 19<sup>th</sup> Centuries**. Explore the world of the beloved English author, Jane Austen, through the arts of her time. We'll see paintings that Austen herself would have seen; portraits of ladies, gentlemen, and handsome military officers by famous artists such as Gainsborough and Reynolds, and English landscape paintings by Constable and Turner. We will also look at the changing fashions of her day, country estates and gardens, and the budding English porcelain industry. A perspective of Jane Austen's world will emerge, which will illuminate her life, her novels, and the fascinating time and place in which she lived. *RSVP by August 5.*

## Luncheon Details

**RSVP** By the Wednesday before the luncheon 528-1182  
or [friendshipcircle@jccsoco.org](mailto:friendshipcircle@jccsoco.org)

**Time** 12:00–1:30 pm

**Location** Congregation Shomrei Torah, 2600 Bennett Valley Rd., Santa Rosa.

**Price** \$12 Friendship Circle members; \$15 non-members, includes catered lunch and dessert. Payment is accepted at the door. Please bring currency no higher than \$50.

Lunches are ordered according to the number of reservations. If you are unable to attend a luncheon for which you are reserved, please spare us the loss and make a donation for an equal or greater amount. Thank you for your support.

*Rides to Friendship Circle events from JFCS may be available in select areas (now including Petaluma) upon request one week prior to date of event thanks to a grant from the San Francisco Jewish Community Federation.*

# Announcements & Appreciation

## Save These Dates!



- June 1 **Luncheon at CST** — *Mah Jongg with Anneliese Heinz*
- Jun 15–Jul 8 *Program Director Jalena Mays on Vacation*
- July 19 **Membership Tea**
- July 26 **Senior Excursion** — Original Joe's and "Company," SF Playhouse, SF
- August 10 **Luncheon at CST** — *Jane Austin with Katheryn Zupsic*
- August 20 **Senior Excursion** — "Phantom of the Opera," SHN Orpheum Theater, SF
- August 24 **Luncheon at CST** — Naomi Tickle

## Pesach Outreach Appreciation

### Thank you Senior Community Activity Directors:

Jenna Scott of Emeritus in Rohnert Park, Belvia Robbins of Sunrise of Petaluma, Maggie Blanchard of Brookdale Chanate, John Gilfillian of Oakmont Gardens, Elizabeth Bruno of Villa Capri, Alice Ugarte of Lodge at Paulin Creek, Tracey Mease of Vineyard Commons, Jaquie Robb of Spring Lake Village, and Emily Webster of Sebastopol.

### Thank You Volunteers and Lay Leaders:

Elisabeth Van Nuys, Judith Helman, Sonia Tubridy, Natasha and Gregory Perhson, Elly Cohen, Jerry Newman, Fran Danoff, Norman Eisley, Caryn Fried, Eli Cohen, Steve Einstein, Myrna Rivkin, Harriet Baer, Vicki Kalish, and Natalie Friedman.

## Kugel and Cookie Corner

Thank you to the many volunteer bakers, servers, and schleppers who supported the Friendship Circle at Simcha Sunday this year. Your help makes the Kugel and Cookie Corner happen every year and we couldn't have done it without you!

Lois Glenn, Carol Jarvis, Myrna Rivkin, Christina Damerow, Harriet Baer, Ede Smith, Ruth Polansky, Marlene Rose, Eleanor Olson, Ray Kaplan, Liz and Joelle Hagen, Anne Brisgel, Edee Sternfield-Squires, Elly Cohen, Evelyn Gurevitch, Geri Fabian, Janine Bamberger, Sharon Schector, Vicki Kalish, Rachel Blum, David and Jacqueline Marcus, Yvonne Baginski.



*If you are remembering someone you hold dear, or would like to celebrate a friend or family member, please consider making a donation to the Friendship Circle in their honor.*

## Thank You Thank You

For generous donations made to the Friendship Circle, above and beyond regular membership dues, we would like to thank the following members: **Phyllis Nesbitt, Ronald & Lillian Shelan, Marvin & Shirley Dolowitz, Jill & Rick Permutt, Joyce Bowen,** and **Ira and Ruth Rosenberg.**

Thank you **Isabel Auerbach,** and **Henry & Lucille Libicki** for your generous donations towards Friendship Circle programming.

## Generous Donations

- **Sheila Parnes** in Memory of Lil Crandon
- **Florence Boxerman** in Honor of Harry Hankin's 100th Birthday
- **Maurice Jones** in Memory of Marlene Jones
- **Lillian Judd** in Appreciation of those who Purchased Her Book on Simcha Sunday
- **Harriet Baer** in Celebration of Harry Hankin's 100th Birthday
- **Birdie Lane** in Memory of Wolfe Rudman
- **Sylvia Sendar** in Memory of Neil Sendar
- **Vicki Kalish** in Honor of Mr. and Mrs. Leslie Pollack's 50<sup>th</sup> Wedding Anniversary
- **Renee Rappaport** in Honor of Harry Hankin's Birthday
- **Earl and Bines Goldberg** in Honor of the Bamberger Family

## Welcome to New Friendship Circle Members

**Arlene Wasserman  
Elizabeth Sample  
Howard & June Moes  
Vic & Irene Garzouzi  
Mina Leibowitz  
Nathan Kallman  
Sally Ervin**



The **ASHLAND TRIP** to the Oregon Shakespeare Festival from Oct 19–23 is **SOLD OUT**. We are continuing to accept names for the waitlist in case of cancellations. Please contact FC Program Assistant, Jacki Newfield at 707-528-1182 or [jackin@jccsoco.org](mailto:jackin@jccsoco.org) for more information.



Be Our Guest...  
**Annual Friendship Circle  
MEMBERSHIP TEA**

When the JCC Friendship Circle  
Advisory Committee Honors  
**YOU!**

**Sunday, July 19 • 2:00–4:00 pm**

Entertainment ~ Coffee ~ Tea ~ Iced Tea ~ Treats ~ Door Prizes

**Friends of the Islands**, a Sonoma County based group of friends, present Hawaiian mele music and dance. Be mesmerized by the beautiful island melodies, sing along, and feel the warmth of summer and the Aloha spirit through music.



We hope to see you there! It's always a lot of fun!

Congregation Shomrei Torah, 2600 Bennett Valley Road, Santa Rosa

**If you have not yet sent in your  
annual dues, it's not too late!**

There is a membership application  
on page 6 of this newsletter.

Friendship Circle Members are **FREE!** Guests who are not a member of Friendship Circle are welcome to attend the Hawaiian Luau Membership Tea and will be charged \$12 at the door. Payment by check or cash is accepted. Please bring currency no higher than \$50.

**RESERVE BY JULY 15**

RSVP to Jacki Newfield, Program Assistant  
at 528-1182 or [jackin@jccsoco.org](mailto:jackin@jccsoco.org).

A ride to the Tea on the JFCS van  
may be available if requested by July 13.



# COMPANY

A Musical Comedy by Stephen Sondheim and George Furth

## Join Friendship Circle for a Senior Excursion to Original Joe's and the SF Playhouse on Sunday, July 26

Enjoy the company of friends and a delicious Italian meal at **Original Joe's** prior to the show. Original Joe's is the oldest of all existing Joe's restaurants in the country and is the innovator of what is now nationally known as the "Joe's Concept." With its signature red leather booths, legendary smooth cocktails, and renowned Italian-American menu, Joe's has come to signify its own Northern Californian category of food and symbolizes classic Italian American comfort food at its finest. *Please select one of the following and indicate your choice when making your reservation:*

**Chicken Piccata • Eggplant Parmigiana • Char Broiled Salmon**

After lunch, we'll head to the SF Playhouse for the Award-Winning and Critically Acclaimed Broadway musical, **Company** by Stephen Sondheim and George Furth: What do you do when you've got three girlfriends, all your friends are married, and it's your birthday? Find out in Stephen Sondheim's groundbreaking musical comedy. It's today in Manhattan, and Robert is unable to make a commitment of his own as he makes the circuit of his married friends, alternately observing and participating in the ups and downs of their relationships.

Located in the heart of the Union Square Theater District, **San Francisco Playhouse** is the city's Off-Broadway company, an intimate alternative to the larger more traditional Union Square theater fare. The San Francisco Playhouse provides audiences the opportunity to experience professional theater with top-notch actors and world-class design in a setting where they are close to the action.



**Cost:** \$55 Friendship Circle Members; \$70 non-members (includes: transportation, lunch, show, parking and tolls, tax and gratuity, and snacks along the way).

**Medical Emergency Contact Form:** You must have an updated medical form by date of departure. If we do not have a current medical form for you on file, visit [www.jccsoco.org](http://www.jccsoco.org) or request a form to complete and return to the friendship circle office prior to the day of the trip. Please call Jacki at 528-1182 if you have any questions.

**Reservations:** Limited space available. RSVP by July 15. Friendship Circle Members and those who have not been able to attend a recent excursion will be given first priority. Please call the Friendship Circle office at 707-528-1182 to reserve. As soon as we have confirmed receipt of your reservation by phone, you can pay using a credit card over the phone or mail in a check made payable to the JCC, Friendship Circle, 1301 Farmers Lane, Suite C103, Santa Rosa, CA 95405. This will secure your reservation. Please include the name and date of the event on your check (Company 7/26). **Please make your reservation early so you don't miss out.** We strongly encourage those who have never attended one of our excursions to sign up! **No one is ever turned away based on ability to pay.** (Please speak to Jalena in confidence.)

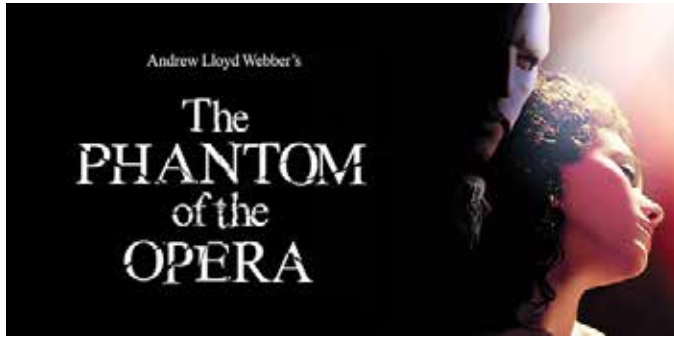
### Bus Schedule:

- **LEAVES** at 10:15 AM from Congregation Beth Ami (4676 Mayette Ave, Santa Rosa). Please park in the overflow parking lot (west).
- **LEAVES** at 10:45 AM from Petaluma Community Center (320 N. Mc Dowell Blvd., Petaluma).
- LEAVING SF Playhouse immediately after the show AT APPROXIMATELY 4:30 PM.

*Rides to and from the bus on the JFCS van may be available upon request by July 17.*

*When making your reservation, please let us know if you need a ride to the bus or if you are meeting the bus in Petaluma.*

*Senior Excursions are sponsored with the generous support of the Senior Excursion Fund of the Jewish Community Federation of San Francisco, the Peninsula, Marin and Sonoma Counties.*



Senior Excursion to SHN's  
*Orpheum Theater*  
**THE PHANTOM  
 OF THE OPERA**  
 Sunday, August 20

*A Spectacular New Production*

Following an acclaimed sold-out tour of the United Kingdom, Cameron Mackintosh's spectacular new production of Andrew Lloyd Webber's phenomenal musical success, **THE PHANTOM OF THE OPERA**, will come to San Francisco as part of a brand new North American production. Critics are raving that this breathtaking production is "bigger and better than ever before." *This PHANTOM* features a brilliant new scenic design by Paul Brown, Tony Award®-winning original costume design by Maria Björnson, lighting design by Tony Award®-winner Paule Constable, new choreography by Scott Ambler, and a new staging by director Laurence Connor. The production, overseen by Matthew Bourne and Cameron Mackintosh, boasts many exciting special effects including the show's legendary chandelier. The beloved story and thrilling score — with songs like "Music of the Night," "All I Ask Of You," and "Masquerade" — will be performed by a cast and orchestra of 52, making this PHANTOM one of the largest productions now on tour.

**Boxed lunch** will be handed out when you arrive at the bus. Please select one of the following and indicate your choice when making your reservation:



**Smoked Turkey Sandwich • Tuna Salad Sandwich  
 Mediterranean Veggie Sandwich**

**Cost:** \$60 Friendship Circle Members; \$75 non-members (includes: transportation, lunch, show, parking and tolls, tax, gratuity and snacks along the way).

**Medical Emergency Contact Form:** You must have an updated medical form by date of departure. If we do not have a current medical form for you on file, visit [www.jccsoco.org](http://www.jccsoco.org) or request a form to complete and return to the friendship circle office prior to the day of the trip. Please call Jacki at 528-1182 if you have any questions.

**Bus Schedule:**

- **LEAVES** at 11:45 AM from Congregation Beth Ami (4676 Mayette Ave, Santa Rosa). Please park in the overflow parking lot (west).
- **LEAVES** at 12:15 AM from Petaluma Community Center (320 N. Mc Dowell Blvd., Petaluma).
- **LEAVING** San Francisco immediately after the show at APPROXIMATELY 5 PM

*Rides to and from the bus on the JFCS van may be available upon request by July 17.*

*When making your reservation, please let us know if you need a ride to the bus or if you are meeting the bus in Petaluma.*

**Reservations:** Limited to 50. RSVP by August 4. Friendship Circle Members and those who have not been able to attend a recent excursion will be given first priority. Please call the Friendship Circle office at 707-528-1182 to reserve. As soon as we have confirmed receipt of your reservation by phone, you can pay using a credit card over the phone or mail in a check made payable to the JCC, Friendship Circle, 1301 Farmers Lane, Suite C103, Santa Rosa, CA 95405. This will secure your reservation. Please include the name and date of the event on your check (Phantom 8/20). **Please make your reservation early so you don't miss out.** We strongly encourage those who have never attended one of our excursions to sign up! **No one is ever turned away based on ability to pay.** *(Please speak to Jalena in confidence.)*

**First 5 participants to register will receive a complimentary 25 oz. Camelback Water Bottle.**

Senior Excursions are sponsored with the generous support of the Senior Excursion Fund of the Jewish Community Federation of San Francisco, the Peninsula, Marin and Sonoma Counties.



**On the Bus heading to Sacramento, May 12, 2015**

# Meet our new Friendship Circle Program Assistant



Hello: My name is Jacki Newfield, and I am delighted and excited to be working with the Friendship Circle. I was born in Chicago, Illinois and lived in Rogers Park where I stayed until I got married. We then moved to Morton Grove, Ill. where my two children were raised. During this time I was active in organizing Special Olympics activities as well as leading fund-raising for the Chicago Children's Hospital.

Once my children completed their education and went on to college I began to fulfill my dreams and desire of traveling and once I started to visit our beautiful world I could not stop. Some of my travels included Israel where I volunteered 5 times, the last during the Gulf War. My travels have taken me to Papua New Guinea, all through Europe, parts of Africa, Asia, and much more. There was a time that my two children my husband and I lived on 3 different continents. When we returned to the states we moved to St. Louis, MO where I went back to school and completed my BA in Psychology and an MA in Gerontology.

I have had many diverse jobs including my own photography store, working in sales and much more. I realized that I enjoyed working with the aging population and once I completed my MA degree my career led me to traveling with seniors, working for the St. Louis Alzheimer's Association, and then for the Jewish

Federation in a start-up project called St. Louis Naturally Occurring Retirement Community (NORC) where my focus was to help seniors age in place.

After many years of working, my husband and I decided to move to Northern California. We had lived in California from Palm Springs all the way to LA but never north. So we decided that would be our next adventure and we are enjoying our new home.

I am looking forward to meeting FC members at many of our wonderful functions. See you around!!

## REDUCE → REUSE → RECYCLE

The Friendship Circle cares about our environment, and strives to reduce its carbon footprint. We have begun to use compostable supplies at our luncheons and continue to discover ways to become more GREEN.

We are now offering a paperless way to receive this Friendship Circle Newsletter. Receiving the newsletter online = no waiting; reduced paper waste; and you'll be first to know what events are upcoming.

If you would like to read our newsletter online and STOP receiving the paper copy in your mailbox, please let us know by contacting Jacki at 707-528-1182 or [jackin@jccsoco.org](mailto:jackin@jccsoco.org).



## Clubs and Classes

### Modern Dance with Phyllis Nesbitt

**Location:** Congregation Shomrei Torah, 2600 Bennett Valley Road in Santa Rosa

**When:** Tuesdays, 10:00-10:45 am

**RSVP, 528-1476 or [jalenam@jccsoco.org](mailto:jalenam@jccsoco.org)**

### Mahjongg with Carol Jarvis

**Please make reservations in advance so we have enough supplies for everyone. All levels welcome.**

**Location:** Upstairs at the JCC (no elevator)

**When:** 2<sup>nd</sup> & 4<sup>th</sup> Tuesday of each month, 1:00-3:00 pm

**Donation:** \$2 per class paid at the door

**RSVP, 528-1476 or [jalenam@jccsoco.org](mailto:jalenam@jccsoco.org)**

### 2 Classes Sponsored by the Friendship Circle, SRJC, and Congregation Beth Ami

**Location:** Congregation Beth Ami, 4676 Mayette Ave in Santa Rosa, Rooms 12 & 13

**When:**

- **Autobiographical Creative Writing** with Dani Burlison on Mondays, 9:30 am-12:30 pm
- **Watercolor** with Susan St. Thomas on Tuesdays, 10:00 am-12:30 pm

Free, drop-ins welcome, open to all.

### Exercise Class with Barbara Goodridge

**Location:** Congregation Shomrei Torah, 2600 Bennett Valley Road in Santa Rosa

**When:** Wednesdays & Fridays, 10:20-11:30 am

Free, drop-ins welcome, open to all.

Sponsored by the Friendship Circle, SRJC, and Congregation Shomrei Torah



## Seniors At Home

BETTER CARE STARTS AT HOME



Home Care, Care Management,  
Transportation, and more

Call **707-571-8533**

[www.SeniorsAtHome.org](http://www.SeniorsAtHome.org)

A DIVISION OF JEWISH FAMILY AND CHILDREN'S SERVICES



*Celebrate the spirit of Tzedakah  
and the Joy of Tikkun Olam with  
the Jewish Community Free Clinic*

NOW LOCATED  
50 Montgomery Dr.  
Santa Rosa, 95404  
VOLUNTEERS ARE  
ALWAYS NEEDED

Become a friend of the JCFC  
[www.jewishfreeclinic.org](http://www.jewishfreeclinic.org)  
[info@jewishfreeclinic.org](mailto:info@jewishfreeclinic.org)  
(707) 585-7780

# Please Become a Friendship Circle "Member"



**Call Jalena at 707/528-1476 or fill out the form below and sent it in with payment to:**  
 Friendship Circle / JCC, Sonoma County • 1301 Farmers Lane, Suite C103 • Santa Rosa, CA 95405

## YOUR INFORMATION

Name(s): \_\_\_\_\_

Address \_\_\_\_\_ Email \_\_\_\_\_

City \_\_\_\_\_ Zip \_\_\_\_\_ Phone \_\_\_\_\_

Birthday(s) \_\_\_\_\_ / \_\_\_\_\_ / \_\_\_\_\_  
 Month Day Month Day

## CONTRIBUTION

\$50 Individual Membership

\$85 Couples' Membership

*This is also an opportunity for you to make an additional annual gift to Friendship Circle.  
 We depend on those who can, to give beyond the basic membership fee.*

*Know that your support makes it possible for others to stay connected and participate. Thank you.*

\$1000 \_\_\_\_\_ \$540 \_\_\_\_\_ \$360 \_\_\_\_\_ \$180 \_\_\_\_\_ Other \$ \_\_\_\_\_

## PAYMENT OPTIONS

Check (payable to Friendship Circle)

MasterCard

Visa

Credit Card Number: \_\_\_\_\_

Expiration Date: \_\_\_\_\_ / \_\_\_\_\_

Amount to charge \$ \_\_\_\_\_

**Please note:** By joining Friendship Circle you are granting the JCC permission to take photos during Friendship Circle events. These photos may include your image, and may be used in Friendship Circle newsletters, JCC website, eNews announcements, and/or other Friendship Circle publicity. If you have any concerns regarding this policy, contact Jalena Mays, 707-528-1476, [jalenam@jccsoco.org](mailto:jalenam@jccsoco.org).





# Jewish Community Center

SONOMA COUNTY  
1301 Farmers Lane, Suite 103  
Santa Rosa, CA 95405

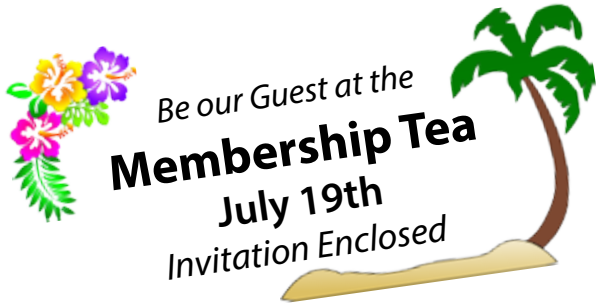
June / July 2015

ADDRESS SERVICE REQUESTED

# Friendship NEWSLETTER Circle

This newsletter is a periodical issued bimonthly.  
It is published by the Jewish Community Center, Sonoma County.  
All members receive this periodical free.

Non Profit Org  
U.S. Postage  
PAID  
Permit No. 465  
Santa Rosa, CA



## We Appreciate Your Generosity

You may make a tax-deductible contribution directly to Friendship Circle:

- In honor of an event or someone who is a light in your life
- In tribute to the memory of someone you hold dear

We will send a tribute card to the person being acknowledged. I am contributing \$ \_\_\_\_\_ to Friendship Circle.

Please print all names exactly as you wish them to appear: designate Mr., Mrs., Ms., Miss

In Memory of: \_\_\_\_\_

In Honor of: \_\_\_\_\_

Contribution from: \_\_\_\_\_

Address: \_\_\_\_\_

City/State/Zip: \_\_\_\_\_

Please send an acknowledgement to: \_\_\_\_\_

Address: \_\_\_\_\_

City: \_\_\_\_\_ State/Zip: \_\_\_\_\_

*Friendship Circle is a program of the Jewish Community Center, Sonoma County which is a 501(c) 3 non-profit corporation, a beneficiary of the Jewish Community Federation of San Francisco, the Peninsula, Marin and Sonoma Counties.*



*The mission of the Jewish Community Federation is to foster and enhance Jewish life here at home, in Israel, and around the world by caring for the vulnerable, providing Jewish education for our children, engaging our interfaith families, promoting peoplehood and Israel and providing aid in times of crises.*

*Support from the Jewish Community Federation is not enough. We depend on members of the Friendship Circle community for donations and support.*